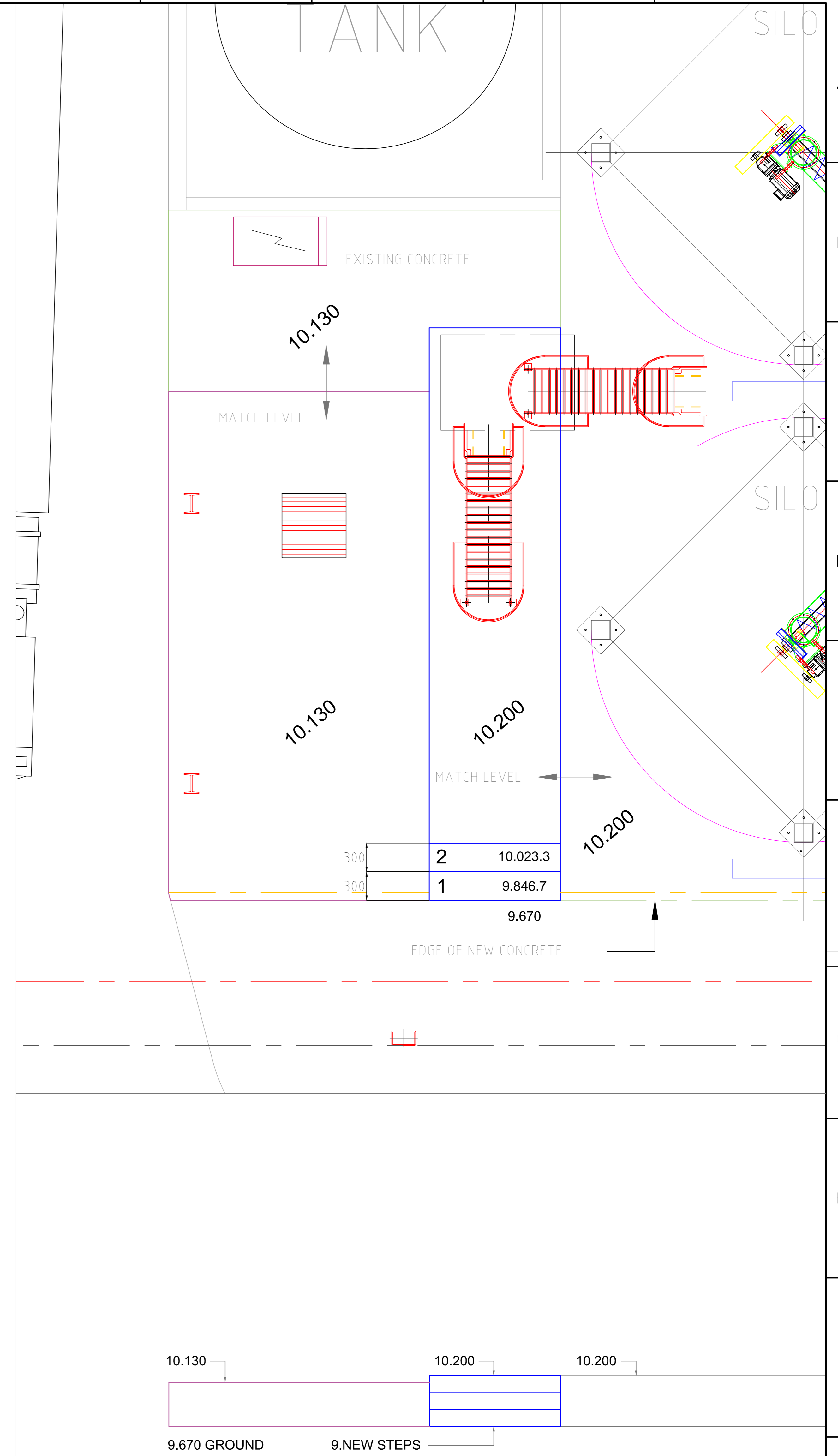
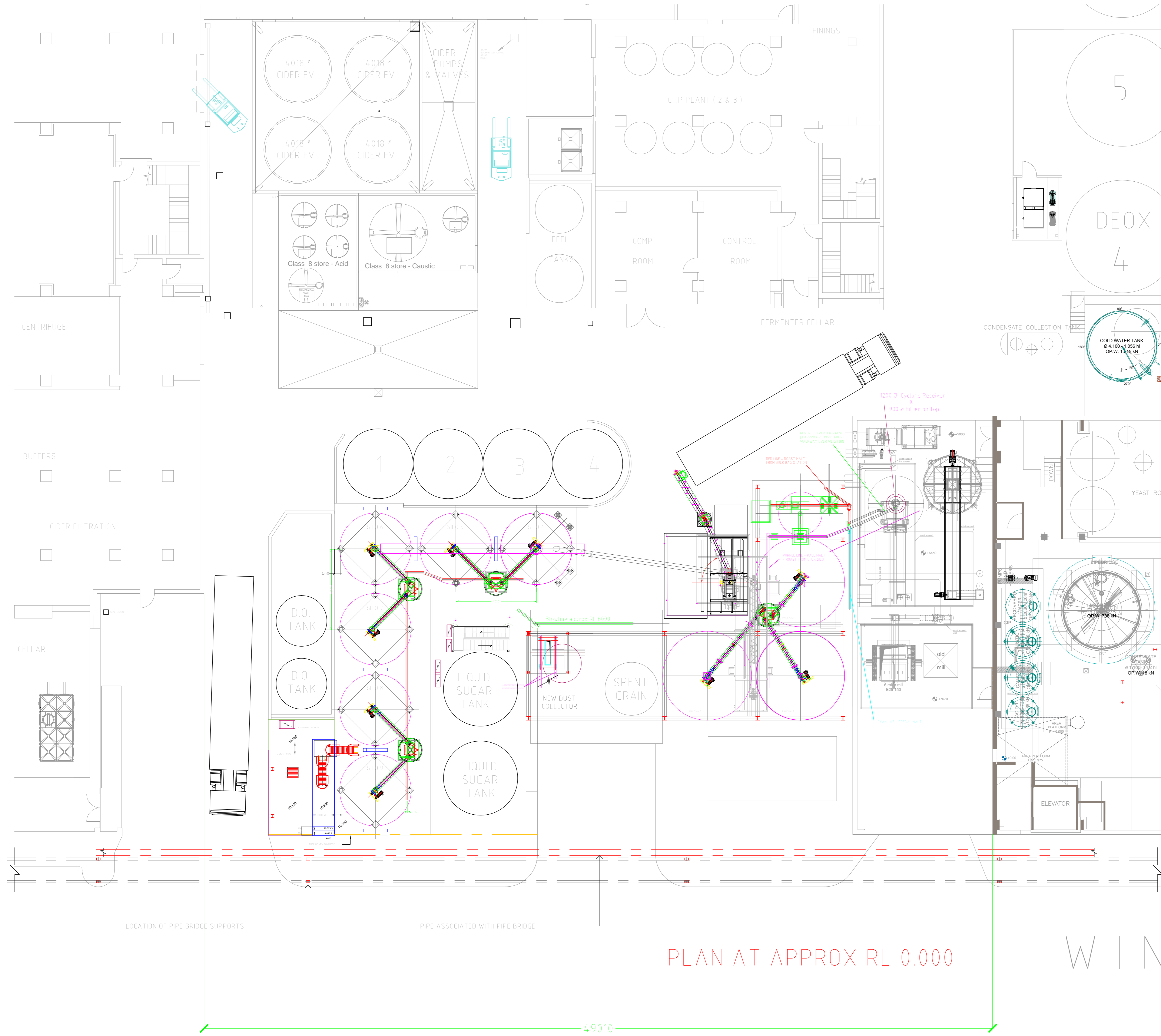


LOCATION OF PIPE BRIDGE SUPPORTS

PIPE ASSOCIATED WITH PIPE BRIDGE

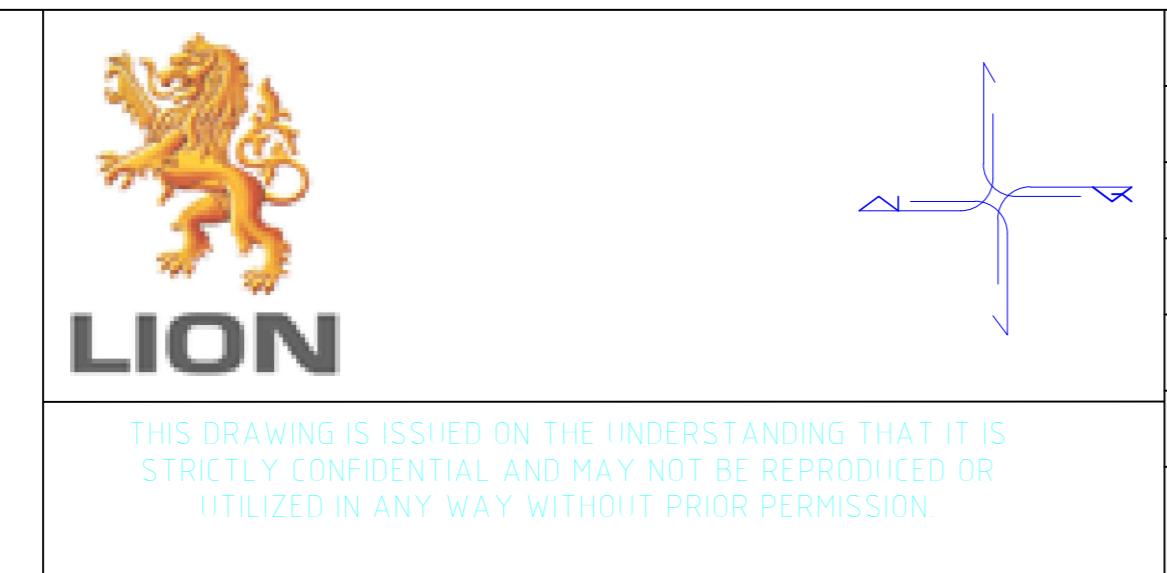
PLAN AT APPROX 1/4"

WINWOOD S



NEW STEP & CONC. DESIGN

NOTES:



THIS DRAWING IS ISSUED ON THE UNDERSTANDING THAT IT IS STRICTLY CONFIDENTIAL AND MAY NOT BE REPRODUCED OR UTILIZED IN ANY WAY WITHOUT PRIOR PERMISSION

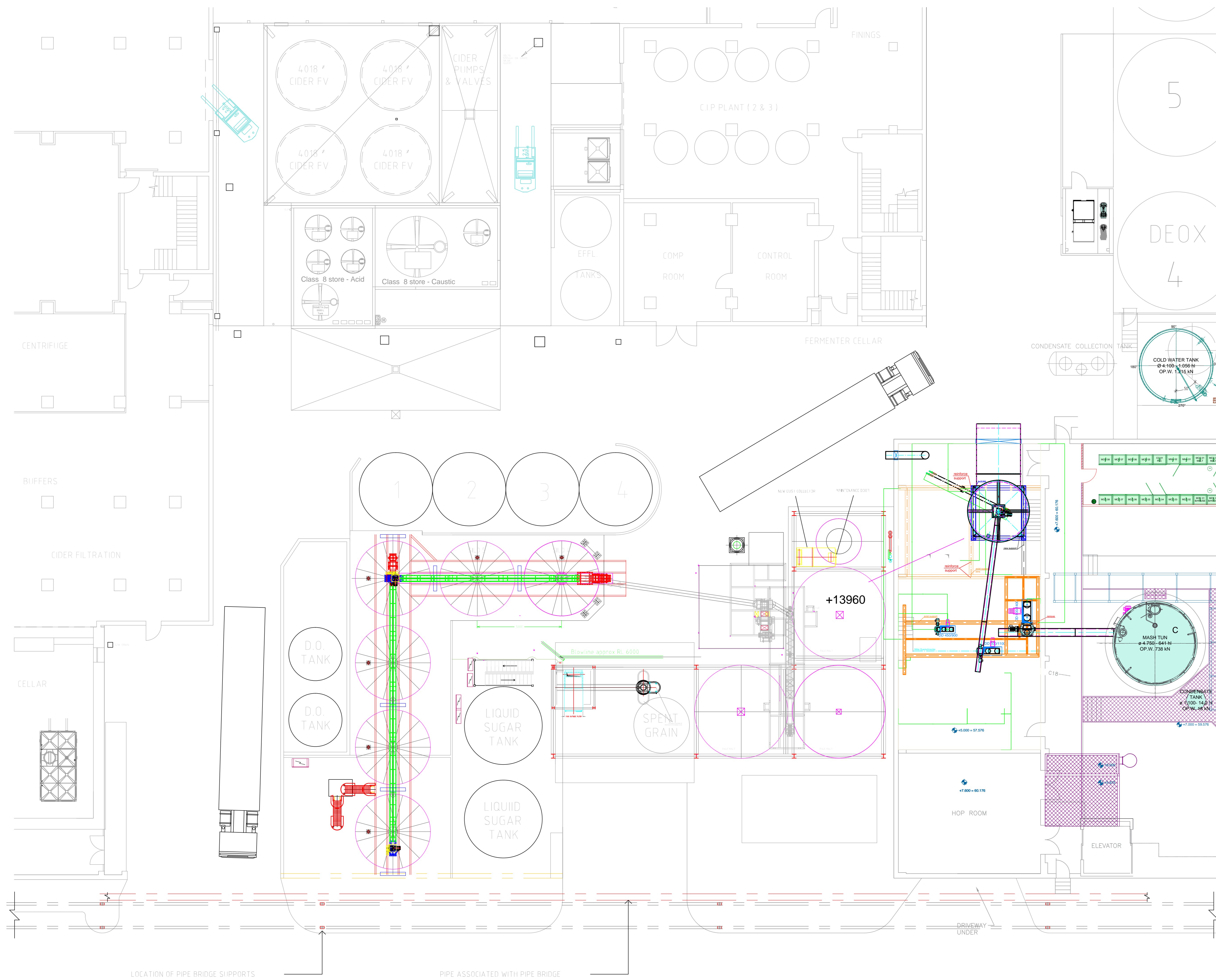
GPM	ROAST MALT 9374-2-9130315 REV A	H	UPDATE ROAST MALT LAYOUT
PROCESS PARTNERS	WEB SMS PP	H	BLOWLINES IN PLACE SHOWN AT +19500
GPM	LWEB J#9374	G	" " " " EAST 185MM & NEW STEP
GPM	LWEB-0-6-160115	F	MALT SILOS MOVED WEST 320MM
GPM	LWEB-2-5-211014	E	MALT SILOS MOVED WEST 200MM
		D	MALT SILOS MOVED EAST 250MM
DRAWING No.	REFERENCE DRAWINGS	REV	DESCRIPTION

PRE'D	CHKD	APPR	AUTH'D	PRJMAN	DATE
					04.04.15
					26.03.15
					17.03.15
					10.03.15
					03.03.15
					27.02.15

Project #	
Drawn	NQ
Date	18.12.2014
Scale	1:100
Checked	
Approved	
Consult.	
Client	

West End	
NEW SPECIALTY MALT SILOS	
GENERAL ARRANGEMENT	
DRG No.	WEB_SMSL_37
SHT. 1 OF 3	REV. 1

A0



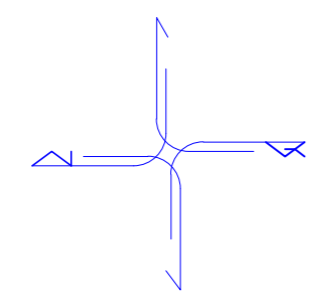
WINWOOD ST

PLAN AT APPROX RL 13960

NOTES:



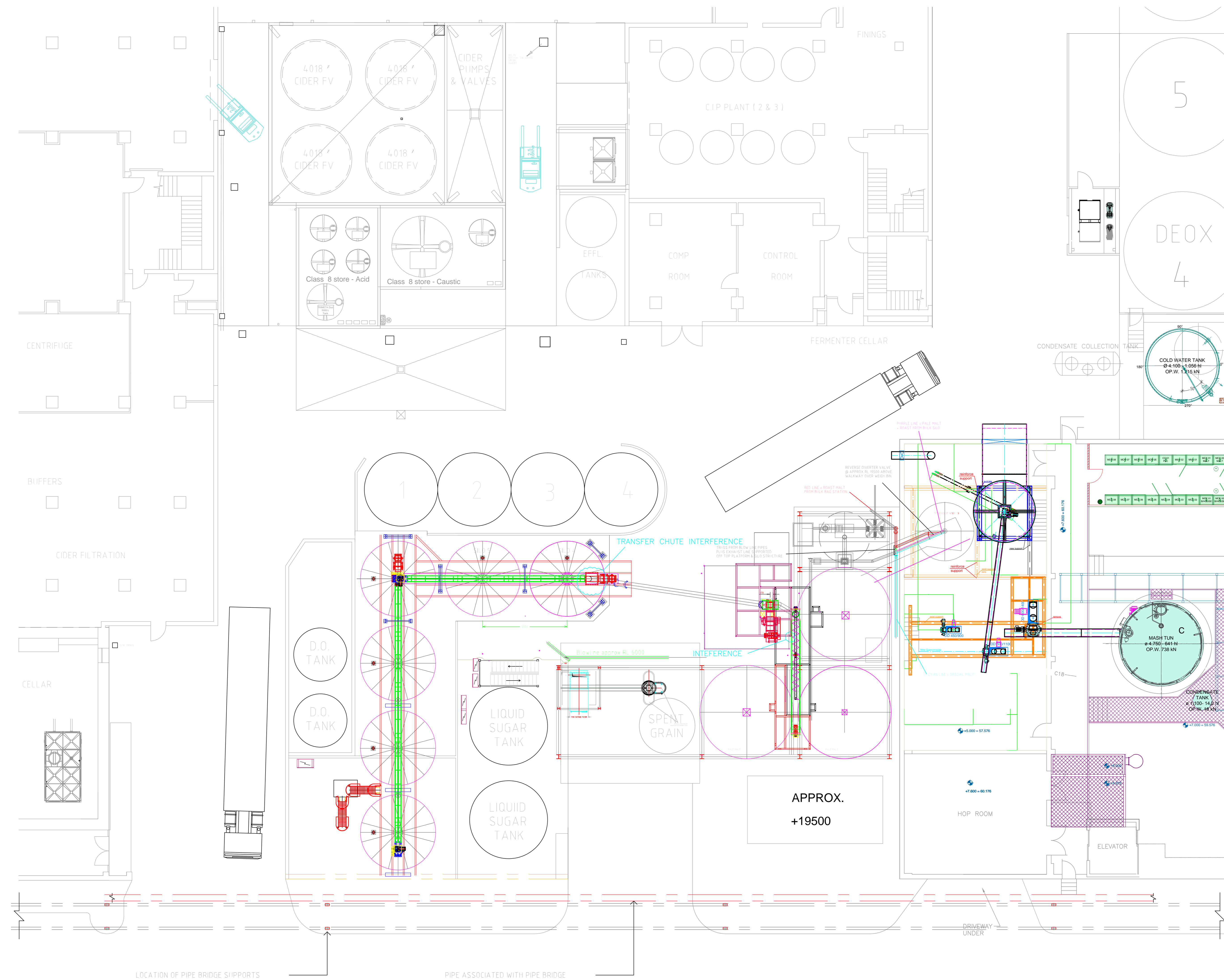
THIS DRAWING IS ISSUED ON THE UNDERSTANDING THAT IT IS STRICTLY CONFIDENTIAL AND MAY NOT BE REPRODUCED OR UTILIZED IN ANY WAY WITHOUT PRIOR PERMISSION



GPM	ROAST MALT 9374-2-9130315 REV A	H	UPDATE ROAST MALT LAYOUT	DH				04.04.15	Project #				
	PROCESS PARTNERS WEB SMS PP	H	BLOWLINES IN PLACE SHOWN AT +19500	NQ				26.03.15	Drawn				NQ
GPM	LWEB J#9374	G	" " " " EAST 185MM & NEW STEP	NQ				17.03.15	Date				18.12.2014
GPM	LWEB-0-6-160115	F	MALT SILOS MOVED WEST 320MM	NQ				10.03.15	Scale				1:100
GPM	LWEB-2-5-211014	E	MALT SILOS MOVED WEST 200MM	NQ				03.03.15	Checked				
		D	MALT SILOS MOVED EAST 250MM	NQ				27.02.15	Approved				
DRAWING No.	REFERENCE DRAWINGS	REV	DESCRIPTION	PRE'D	CHKD	APPR	AUTH'D	PRJMAN	DATE	Consult.	Client	DRG No.	WEST_SMSL_37
												SHT. 2 OF 3	REV. 1

West End
NEW SPECIALTY
MALT SILOS
GENERAL ARRANGEMENT

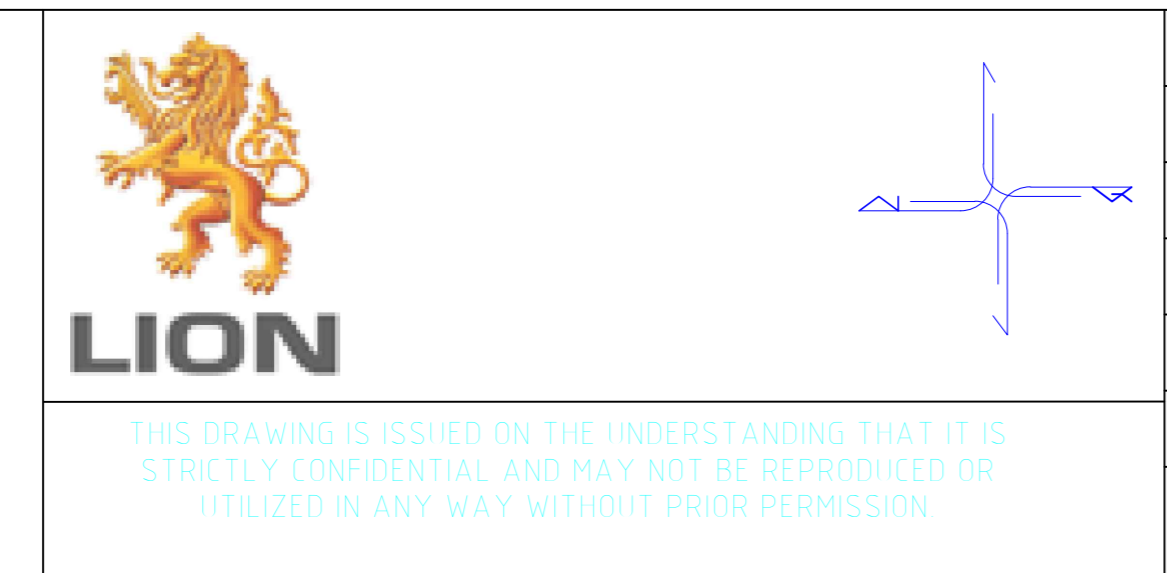
A0



WINWOOD ST

PLAN AT APPROX RL 1950

NOTES:



THIS DRAWING IS ISSUED ON THE UNDERSTANDING THAT IT IS STRICTLY CONFIDENTIAL AND MAY NOT BE REPRODUCED OR UTILIZED IN ANY WAY WITHOUT PRIOR PERMISSION

GPM	ROAST MALT 9374-2-9130315 REV A
PROCESS PARTNERS	WEB SMS PP
GPM	LWEB J#9374
GPM	LWEB-0-6-160115
GPM	LWEB-2-5-211014
DRAWING No.	REFERENCE DRAWINGS

I	UPDATE +1950 LEVEL WITH SURVEY DATA FROM 9/4/15	DH		10.04.15	Project #				
I	UPDATE ROAST MALT LAYOUT	DH		01.04.15	Drawn				
H	BLOWLINES IN PLACE SHOWN AT +19500	NQ		26.03.15	Date				
G	" " EAST 185MM & NEW STEP	NQ		17.03.15	Scale				
F	MALT SILOS MOVED WEST 320MM	NQ		10.03.15	Checked				
E	MALT SILOS MOVED WEST 200MM	NQ		03.03.15	Approved				
REV	DESCRIPTION	PRE'D	CHKD	APPR	AUTH'D	PRJ/MAN	DATE	Consult.	Client

18.12.2014	NQ	West End
17.03.15	1:100	NEW SPECIALTY
		MALT SILOS
		GENERAL ARRANGEMENT
		ORG No. WEB_SMSL_37
		SHT. 3 OF 3
		REV. J

A0